

FUEGO MAP

Viewer manual, February 2023

Fireball Information Technologies, LLC.
info@fireballit.com

Contents

1. Introduction	2
2. Key terms and concepts	2
2.1. Detections	2
2.2. Camera view	2
2.3. Reports	2
2.4. Confirmation status	2
3. Main Screen – Report List	3
3.1. Report list	3
3.2. Filters panel	3
3.3. Map	4
3.4. User Menu	4
4. Report View	5
4.1. Back button	5
4.2. Copy coordinates button	5
4.3. Detecting camera views list	5
5. Detecting Camera Dialog	6
5.1. Camera name	6
5.2. Next/previous image buttons	6
5.3. Image	6
5.4. Detection box	6
Detection box context menu	6
5.5. Timeline	6
5.6. Timeline shortcuts	7
6. Camera Dialog	7

1. Introduction

Fuego Map presents reports of suspected fires to users. Detections are performed using artificial intelligence with 'humans in-the-loop'.

The following manual outlines the features of the app.

We aim to make viewing our reports as easy and efficient as possible – please let us know if you encounter any difficulties, or you find any tasks to be slow, inefficient or repetitive.

2. Key terms and concepts

2.1. Detections

Images from the network of cameras are processed and analysed resulting in detections. These are shown as boxes (in the image) around what may be smoke from a fire.

2.2. Camera view

Some cameras are rotating. A camera view is a series of chronological images from the same camera in the same direction. These images should always show the same thing, but at different times.

2.3. Reports

A report is a collection of detections that show the same fire, or suspected fire.

A report usually starts as one detection from a camera view. However, the same camera will give new detections of the same fire over time. Additionally, other cameras which see the same fire will give their own detections. All these detections belong to the same report.

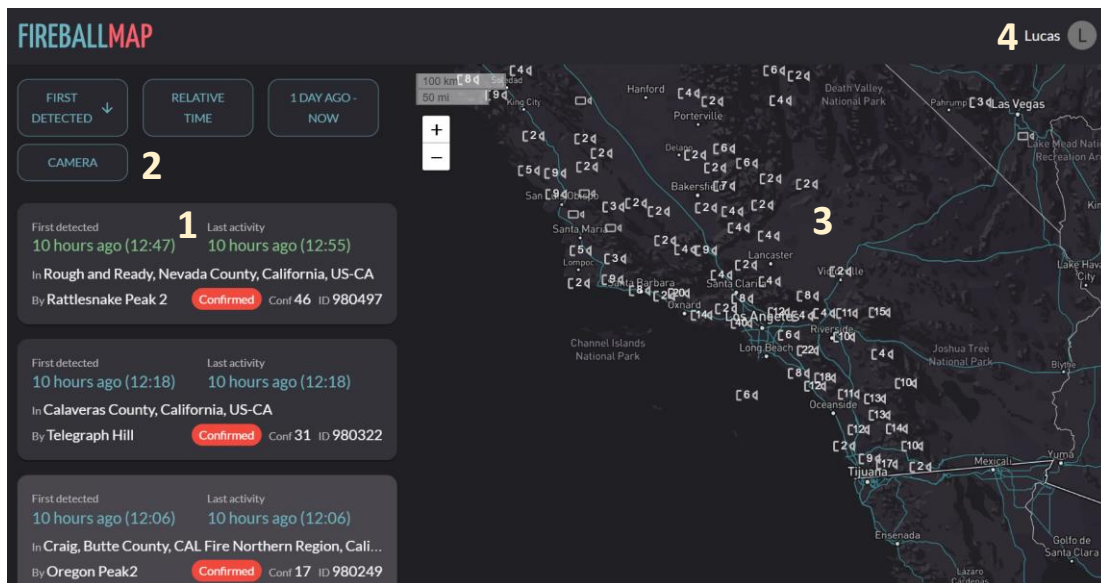
It may be helpful to think that Reports contain Camera Views, and Camera Views contain Detections.

2.4. Confirmation status

Reports have one of the following confirmation statuses:

- Confirmed – the report detections are true positives, and show a fire or smoke
- Watch – it is not clear if the report is a fire or an artifact. User's should use prior and future images to determine the appropriate status (see Detecting Camera Section below).

3. Main Screen – Report List



3.1. Report list

This is the list of reports. Each report shows some basic information such as time of first detection/latest activity, location, detecting camera, confirmation status, confidence and report id.

Clicking on a report will bring you to the detailed report view (see 4. Report View, page 5).

3.2. Filters panel

The buttons on this panel help control which reports are shown in the report list.

- Last Activity/First Detected – Change the sort order between last activity time (ascending or descending) and first detection time (ascending or descending)
- Relative Time/Time and Date – Show relative time (e.g. 5 minutes ago) or absolute time (eg. 17 Jan, 12:00)
- Time range selector – Click to reveal a slider which controls the time range of reports to show
- Camera – Only show reports from a single camera

If you are not seeing reports which you expect to see, make sure you are not accidentally filtering by camera, and you have selected the appropriate time range.

Due to web browser limitations, the report list can only show a few hundred reports. If there are too many, you will see the message: “Too many reports to display. Use the report state or time range filter to narrow down the list.” This will only happen if there are more than several hundred reports in the time range you have selected, which is very rare. Simply choose a narrower time range if it does appear.

3.3. Map

The map shows the location of cameras and report detection areas. You can move the map by clicking and dragging the mouse, and zoom using the mouse wheel or zoom controls in the top-left.

If the camera icon shows a number, multiple cameras are too close to display individually on the map. You can zoom closer to show individual cameras, or click to separate them out.

Clicking on an individual camera opens the camera dialog (see 6. Camera Dialog, page 7).

Clicking on a report area will open the detailed view for that report (see 4. Report View, page 5).

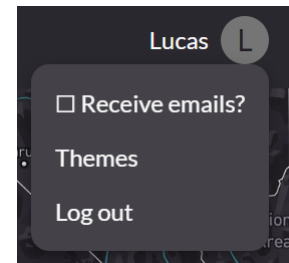


A multiple camera icon with a number, an individual camera, and an expanded multiple camera icon after clicking

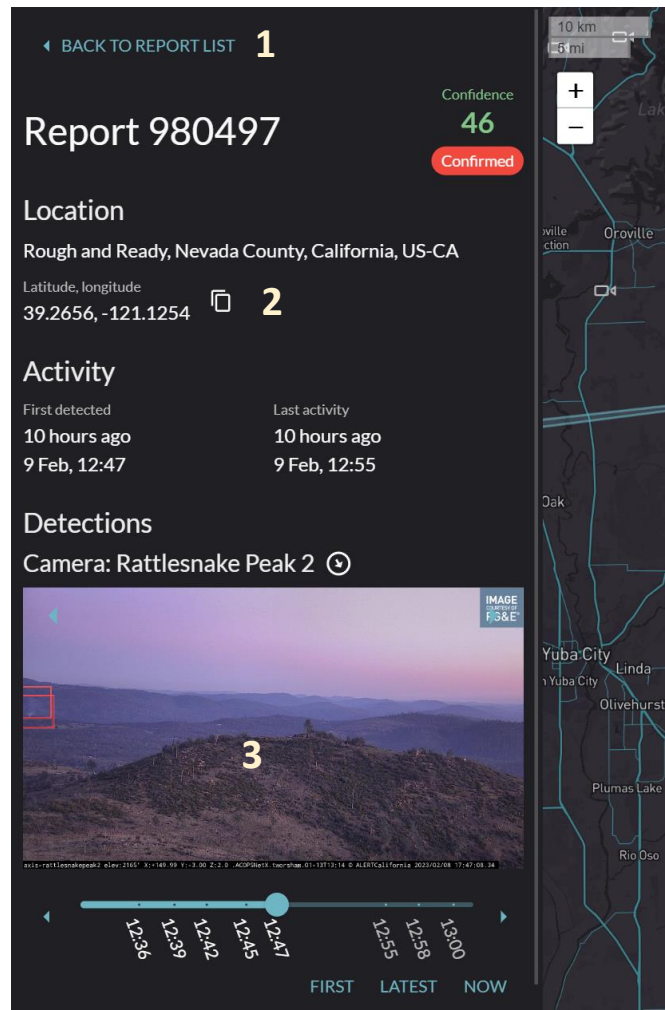
3.4. User Menu

Clicking this menu shows the following choices:

- Receive emails? If selected, you will receive email alerts for new or changed reports
- Themes – change the current theme
- Log out – log out of your account and return to the login page



4. Report View



This view shows more detailed information about the report and its detections.

4.1. Back button

Click this to return to the report list.

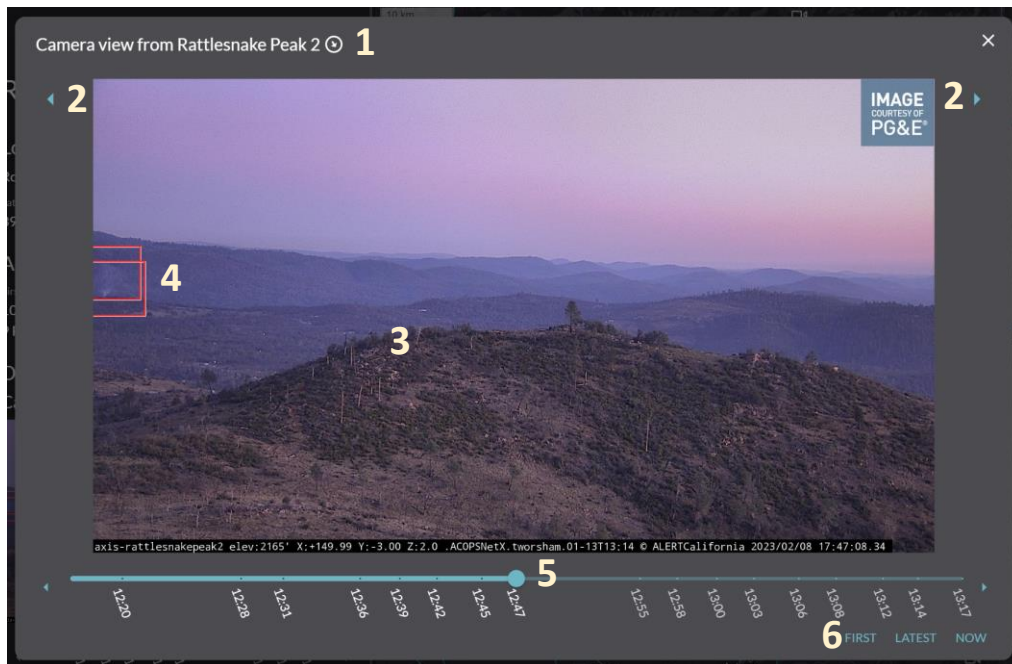
4.2. Copy coordinates button

This copies the latitude, longitude pair onto the clipboard ready for pasting elsewhere.

4.3. Detecting camera views list

This shows a list of camera views whose images have detections in the current report. Clicking the image opens the detecting camera dialog (see below). For information about the timeline and other features in this section, see the detecting camera dialog section below.

5. Detecting Camera Dialog



5.1. Camera name

The name of the camera and the azimuth of the camera view. You can hover over the azimuth icon to show the azimuth in degrees.

5.2. Next/previous image buttons

Show the next or previous image in the chronological timeline.

5.3. Image

The image taken by the camera.

You can use the mouse scroll wheel while hovering over the image to zoom in and out.

5.4. Detection box

Shows detections in the image.

Detection with solid lines belong to the report you are currently viewing. Detections with dashed lines belong to other reports.

Detection box context menu

Clicking on the edge of a detection box opens a context menu.

This menu will either have "Current Report (XXX)" where XXX is a report ID, indicating the detection belongs to the current report, or "Report XXX" which indicates the detection is part of a different report, and can be clicked to take you to that report.

5.5. Timeline

The timeline shows what images from the camera view are available, in chronological order. You can click on any of the points on the timeline to display that image.

If the time of the image you want to view is earlier or later than what you can see on the timeline, you can use the arrows on the left and right to see earlier or later times, and then click the

appropriate time. These arrows do not change the image you are viewing, they only move the timeline. If you want to go back or forward one image, use 5.2. Next/previous image buttons.

5.6. Timeline shortcuts

These buttons take you to different places on the timeline:

- First – the first detection in the report
- Latest – the latest detection in the report
- Now – the image the camera is currently showing, or the most recent

6. Camera Dialog

The camera dialog is the same as the report camera view dialog (see 5. Detecting Camera Dialog, page 6), with some key differences:

- For rotating cameras, all images are shown, so you will see the camera rotate when changing images
- Clicking a detection box will take you to its report page instead of opening a context menu.